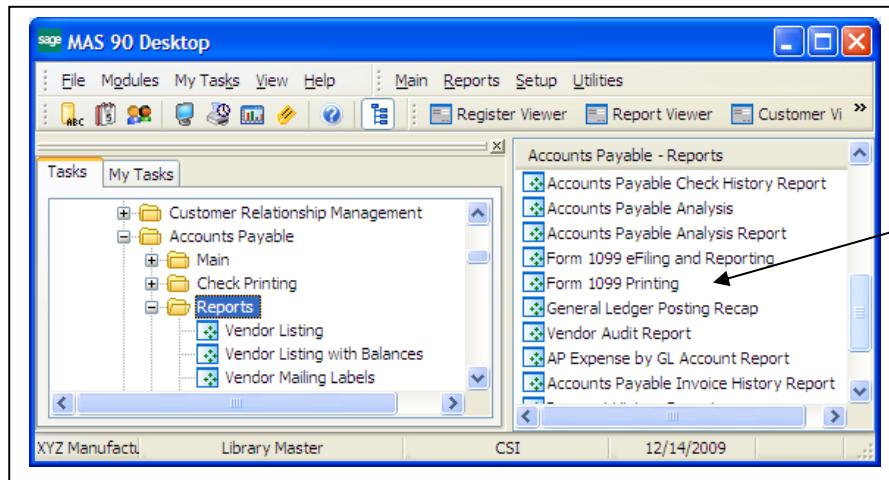
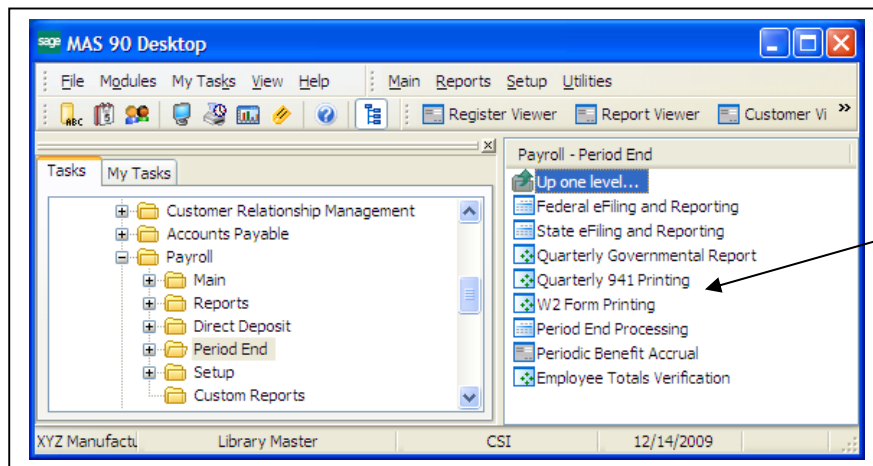


### 3 Ways to Process Federal & State Year End Reports

1. Standard MAS 90 Process.
  - a. Print Forms 941, W-2, or 1099 from MAS 90 PR & AP modules.
2. Federal and State eFiling and Reporting.
  - a. Print over 250 Federal and State forms. Optional eFiling service.
3. Electronic Reporting Module.
  - a. Create W-2 and 1099 electronic transmission files

#### Option 1 – Standard MAS 90 Process

- Print Forms 941, W-2, and 1099 onto pre-printed forms from the MAS90 PR and AP modules
- Mail to the appropriate Federal and State agencies with the manually updated W-3 and 1096 transmittal forms
  - Not allowed if filing > 249 W-2s to SSA and > 49 W-2s to WI DOR; must file electronically
  - Not allowed if filing > 249 1099s to SSA and > 49 1099s to WI DOR; must file electronically
- Deliver to the employee/vendor



### Option 2 – Federal and State eFiling and Reporting

#### Overview

- Streamline your tax reporting process with Sage MAS 90/200 Federal and State eFiling and Reporting. Over 250 Federal and state forms for Unemployment, Withholding and Reporting. You'll be able to automatically eFile W-2s and 1099s to the appropriate state and federal agencies, print and mail the forms to your employees, or choose to use the fee-based eFiling service.
- The electronic forms within Sage MAS 90/200 version 4.30 and above are a replica of the printed government form that you get in the mail. Information from MAS 90 will be populated in the appropriate fields. Simply select the form from within Sage MAS 90, view and edit the information easily on your screen, and once you've verified it's the way you want it, the form is ready to print or eFile.
- Go completely green by utilizing the Aatrix eFiling Service, offered on a transaction fee basis, to further streamline and simplify your tax reporting process. Or, choose to print the forms and mail them yourself using blank, perforated W2 & 1099 forms. You decide how much of the service to utilize, from efficient filing of employee New Hire or Unemployment forms to a complete filing service for W2s and 1099s, with hardcopies sent to your employees, and to you for your records. Provide your employees with immediate access to their copy on a secure Web site. You only incur fees for the forms you choose to eFile. You'll always be in compliance with our automated form updates. And every report is saved in its own history file for easy retrieval to reprint, edit, or eFile.

#### Benefits

- Auto-generate a complete form that is ready to print, sign and mail or eFile
- Always stay in compliance with latest forms – quarterly automated updates
- Save time, money and the environment by utilizing over 250 Federal and State e-forms
- Eliminate manual efforts to handle, align, and store preprinted forms

#### Federal Forms Available for Manual Printing or eFiling

- I-9, W2, W3, W4, W5, 940 EZ, 940, 941, 941 Schedule B, 941 Voucher
- 943, 943-A, 943 Voucher, 945, 945-A, 945 Voucher
- 1099 Misc, 1099 Int, 1099 Patr, 1099 R, 1099 Div

#### Wisconsin Forms Available for eFiling

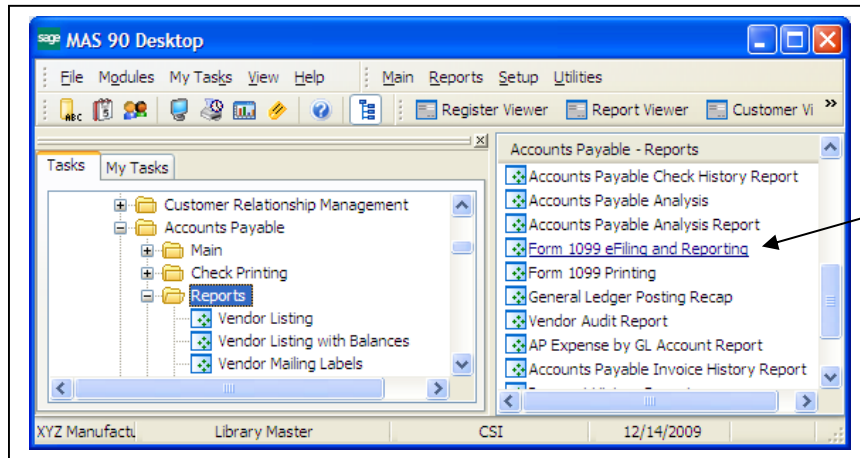
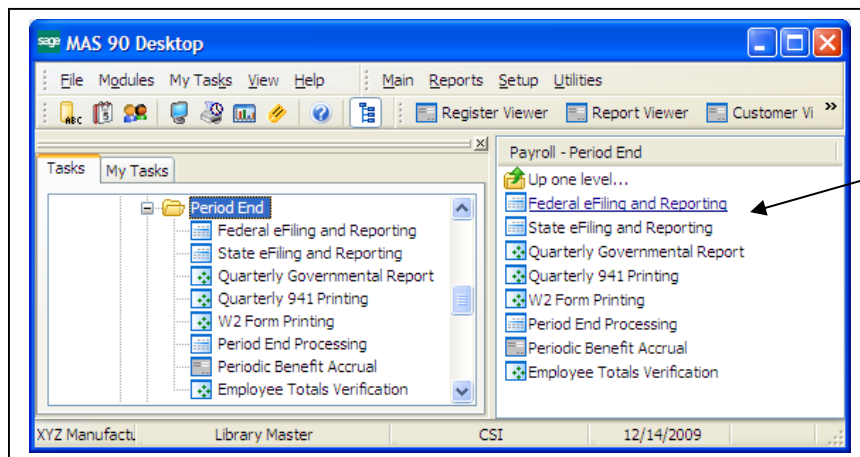
- WT-4 WI New Hire Reporting
  - Use the Employee's Wisconsin Withholding Exemption Certificate/New Hire Reporting to report newly hired or rehired employees within 20 days.
- WI UCT-101/UC-7823 Quarterly Unemployment Contribution and Wage Reports
  - Use these to report quarterly unemployment wages and taxes.
- WI WT-6 Wisconsin Withholding Tax Deposit Report
  - Use this to report and pay state withholding tax.
- WI WT-7 Employer's Annual Reconciliation of Wisconsin Income Tax Withheld from Wages Report
  - Use this to report annual state tax withheld and deposited and to file W-2's, 1099 R's, or W-2 G's.

#### Specs

- Included with MAS 90 versions 4.30 and above.
- E-Filing powered by Aatrix is a separate install that needs to be done on each workstation that will be using the software and service.
- Must have a current MAS 90 Subscription Plan and have an on-line access account setup with Sage.
- View the PDF spec sheet on our website at [www.comstrategies.com](http://www.comstrategies.com)

### Federal and State eFiling and Reporting Summary

- eFiling and Reporting is a new feature in MAS 90 version 4.30 and above.
- MAS90 populates the Aatrix-updated form that can be verified and then printed prior to eFiling.
- Aatrix eFiles the forms to the appropriate Federal and State agencies (there is a fee for this service)
- Aatrix can mail W-2s directly to the employee and/or provide them electronically via a secured website (there is a fee for this service)
- To access these forms, you must have a current Sage MAS 90 Subscription Plan and be registered for on-line access to the Sage Knowledgebase.
- There is a separate workstation installation required for any user wanting to run the Aatrix forms.
- Updated forms are downloaded as available.
- Go to <https://sagemas.aatrix.com> for eFiling pricing information.



### Federal and State eFiling and Reporting - Aatrix eFiling Pricing

- <https://sagemas.aatrix.com> or <https://partner.aatrix.com/index.php/sagemas>
- Complete W-2 efile Service. \$1.69/employee
  - W-2's printed and mailed directly to your employees
  - W-2's efiled to appropriate State and Federal agencies
  - \$24.95 minimum price
- Express W-2 eFile Service. \$0.99/employee
  - W-2's distributed electronically to employees via a secured website
  - Each employee must opt-in to receive an electronic W-2 only
  - W-2's efiled to appropriate State and Federal agencies
- Complete 1099 efile Service. \$1.49/vendor
  - 1099 printed and mailed directly to your vendor
  - 1099 efiled to appropriate State and Federal agencies
  - \$24.95 minimum price
- Federal or State. \$0.49 Federal or \$0.69 State per W-2 or 1099
  - W-2's and 1099's are efiled to either the Federal or State agency
- Quarterly, Annual, New Hire and Payment. AnyReport for \$7.95 plus \$0.25 per employee.
  - See the website or MAS 90 for a list of available reports.

#### W-2 eFile Pricing

Files fed W-2s, state W-2s, mails employee W-2s, and provides employee W-2s on-line.

<b>Complete W-2 eFile Service</b> W-2s are automatically eFiled to the appropriate state and federal agencies and employee W-2s are mailed directly to your employees as well as posted to a secure website for immediate access.	<b>\$1.69/employee</b>
<b>Express W-2 eFile Service</b> Files Federal W-2s, State W-2s and provides employee W-2s on-line via a secure website.	<b>\$0.99/employee</b>
<b>Fed &amp; state</b> W-2s are eFiled to state and fed agencies	<b>\$0.99/employee</b>
<b>Fed only</b> eFile fed W-2s and fed W-3	<b>\$0.49/employee</b>
<b>State only</b> eFile state W-2s and corresponding state W-3	<b>\$0.69/employee</b>
<b>Local W-2 eFile Service</b> eFile supported local W-2s alone or in combination with any eFile option	<b>\$0.69/employee</b>

#### 1099 eFile Pricing

Files fed 1099s, state 1099s, mails recipient 1099s, and provides recipient 1099s on-line.

<b>Complete 1099 eFile Service</b> 1099s are automatically eFiled to the appropriate state and federal agencies and recipient 1099s are mailed directly to your recipients.	<b>\$1.49/recipient</b>
<b>Fed &amp; state</b> 1099ss are eFiled to state and fed agencies	<b>\$0.99/recipient</b>
<b>Fed only</b> eFile fed 1099s and fed 1096	<b>\$0.49/recipient</b>
<b>State only</b> eFile state 1099s and corresponding state 1096	<b>\$0.69/recipient</b>

*\$24.95 minimum applies to all W-2 filings.*

#### Notes

- Pricing per Aatrix website on November 30, 2011
- Sales Support 1-800-426-0854 x-2 or [sales@aatrix.com](mailto:sales@aatrix.com)

### Option 3 – Electronic Reporting Module

#### Overview

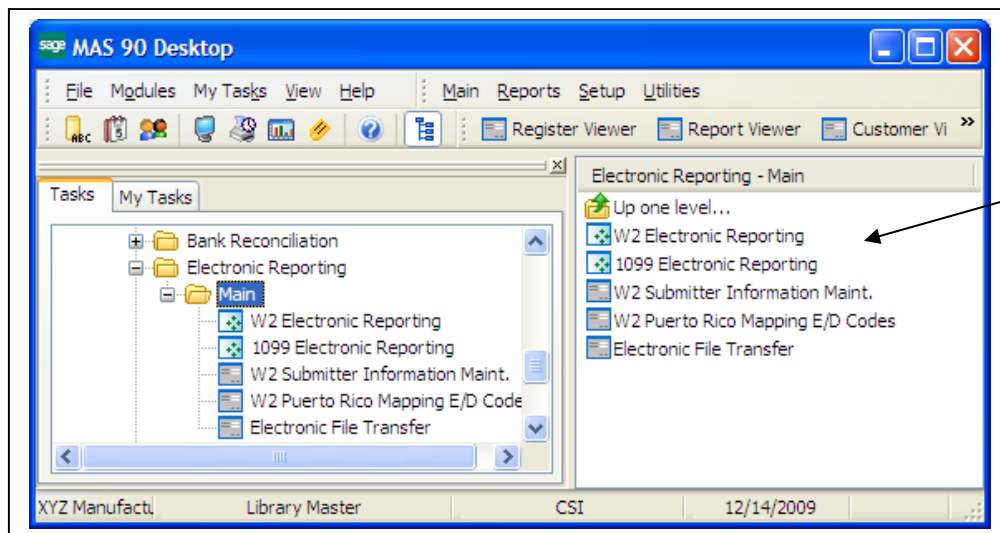
- The Electronic Reporting module provides the capabilities for reporting your wage and payment information from the Payroll and Accounts Payable modules, plus 1099-INT, 1099-DIV, and 1099-MISC information-in the required format mandated by the federal government

#### Benefits

- Integrate with Payroll
- Integrate with Accounts Payable
- Provide state-specific reporting
- Perform test runs
- Create electronic media files for states using MMREF-1 or TIB-4 formats

#### Summary

- Use the Standard MAS 90 process to print Employee W-2s and Vendor 1099s
- Create the W-2 and 1099 electronic transmission files, in the appropriate formats, on your hard drive using the Electronic Reporting module
  - Fed & WI W-2s use EFW2
- Use the appropriate SSA, IRS, or WI DOR website to electronically transmit the created file
  - There is no fee for this
  - Must pre-register with the IRS for 1099 electronic filing
- Purchase Price for the Electronic Reporting Module is \$450 plus the annual subscription plan.



**Information Available on <http://www.comstrategies.com/software/year-end-processing>**

- 2011 Sage Year End FAQ
- 2011 Sage Payroll FAQ
- 2011 Sage Payroll Helpful Hints
- 2011 Sage W-2 Helpful Hints
- Copy MAS 90 Company Data
- 2011 Year End Reporting Options
- MAS 90 Supported Hardware

**Services available from Competitive Strategies, Inc.**

Service	Fee
Install Tax Table changes (when available)	\$125
Install the latest MAS 90 software service packs	\$175
Install the latest software service packs for other enhancements. Call for Quote.	TBD
Setup of Federal & State eFiling and Reporting <ul style="list-style-type: none"> <li>- Install on one workstation that is currently running MAS 90 version 4.3 or above</li> <li>- Setup and register for a Sage on-line account (must have current Sage Subscription Plan)</li> <li>- Download all form updates</li> <li>- Provide initial training and phone support</li> </ul>	\$225
Setup of Electronic Reporting Module <ul style="list-style-type: none"> <li>- Install Electronic Reporting Module on the server</li> <li>- Provide initial training and phone support</li> <li>- Assist with setup and processing for 1 – 2 company codes</li> </ul>	\$275
Assist with Year End Processing (\$140/hour)	hourly

For additional assistance contact: Competitive Strategies, Inc.  
Appleton, WI 54915

(920) 993-1077  
[steve@comstrategies.com](mailto:steve@comstrategies.com)